

# ASCEND TO MIDSTREAM

## LUXURY ESTATE APARTMENTS

### EASY LIVING

ASCEND TO MIDSTREAM offers a unique estate-living concept.

It combines the freedom, outdoor lifestyle, security and space of estate living with the convenience, luxury, easy-living and lock-up-and-go lifestyle of luxury apartment living.



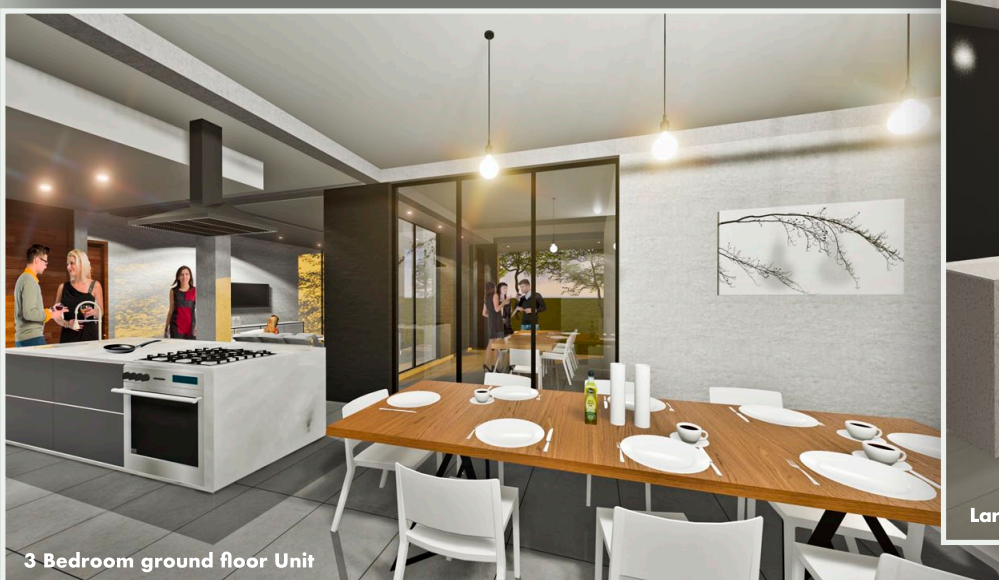
Western facade of building



MasterChef kitchen including i.a. pizza oven



Entrance lobby and slow lounge with hot-desk work stations



3 Bedroom ground floor Unit



Large 2 bedroom STUDIO unit - 3rd and 4th floor



Rooftop entertainment area and swimming pool

#### OVERVIEW

Ascend to Midstream offers a new estate living concept within the well-established Midstream residential security estate. This innovative concept integrates residential security estate living with a luxury apartment lifestyle. This concept reflects the growing global trend of simplifying life, while enjoying carefree elegance and luxury.

The first phase of the Ascend to Midstream development consists of 38 luxury apartments ranging from large 2 and 3 bedroom apartments on the ground floor leading directly onto the Midfield golf course. The 1st and 2nd floors consist of spacious 2 bedroom apartments while luxurious penthouses with private rooftop terraces and loft apartments make up the 3rd and 4th floors.

#### LOCATION

Ascend to Midstream is centrally located within the secure environment of Midstream with easy access to all existing estate facilities and amenities, including the new Midstream Ridge Sport Centre. The site faces north-east and links onto the Midfield golf course, fishing dams and cricket oval, allowing owners direct, uninterrupted access.

#### LIFESTYLE

The luxury apartments offer a unique estate-living concept. It combines the freedom, outdoor lifestyle, security and space of estate living with the convenience, luxury, easy-living and lock-up-and-go lifestyle of luxury apartment living.

In addition to the numerous facilities and amenities provided by Midstream, Ascend to Midstream offers its own unique shared spaces where residents can unwind and slow down, entertain and impress, build friendships and expand networks.

#### Shared spaces

- Stylish entrance lobby and slow lounge
- Rooftop entertainment area and swimming pool overlooking the Midfield golf course and Club House
- MasterChef kitchen to host your guests and awaken your inner chef
- Hot-desk work stations and meeting room for professionals to execute their craft and to network
- Multi-media game and cinema room, also linked to the high speed fibre-optic network

#### ARCHITECTURE and DESIGN notes:

The architectural language of the development deliberately negates stylistic references. The language developed, is a result of a series of responses to a context which includes programme, site and climate, as well as contemporary social, environmental and economic factors. Form not only follows function, just as importantly, it follows context.

All apartments are north-east facing, providing complete privacy and unobstructed 180 degree views of the golf course and fishing dams, while the large floor to ceiling windows allow the sun to penetrate light and warmth deep into the interior of each apartment.

Bondey Midrand

HILTON DEVELOPMENTS

ARCHITECTS

[www.midstream.co.za](http://www.midstream.co.za)